

# CARDPRESSO

NEXT GENERATION PLASTIC CARD SOFTWARE®



## SETUP AND INSTALL GUIDE

# TABLE OF CONTENTS

01. INTRODUCTION

WINDOWS INSTALLATION



02. WELCOME

03. INSTALL OR EVALUATE

04. SHORTCUTS

05. FINISH

MAC OS INSTALLATION



Macintosh

06. INSTALL

07. CONTACTS AND REFERENCES



## 01. INTRODUCTION

cardPresso is the ultimate tool for your professional ID card production in a user friendly way, combining the easy design features with print and advanced encode capabilities on a full feature software application. It is provided in four editions: XXS, XS, XM and XL, that integrate the needed features for ID Card production.

**XXS** has the basic features for card design and printing using predefined templates, edit view for text data input, card/encoding view, barcodes 1D, WIA/TWAIN/DirectShow acquisition and magnetic encoding support.

**XS** adds .XLS, .CSV and .TXT database connection, database sources, card/encoding/database view, browse/find records and link image to DB field.

**XM** adds local MS Access connection, photo on database, FaceCrop tool for face recognition, 2D barcodes, smartcard plugin, batch print and search (query) database records.

**XL** adds ODBC connection, RFID contactless direct encoding, Internal and External RFID encoder support, Multi-Layout card designs, autoprint, conditional printing, operation Logs.


Create professional ID cards with top quality graphics and ready-to-use predefined templates including backgrounds, clipart, shapes and design tools like Image Editor.

### End User License Agreement

To use cardPresso you will need to accept the terms in the End User License Agreement. Please read through this agreement during cardPresso installation before use.

**Note:** the included DVD only contains Video Tutorials that run on PC or home DVD player. The installation files are all located on the USB key.

To install cardPresso, follow the steps starting on the next page.





## 02. WELCOME

Plug the provided USB key on one of your PC available USB ports, the **AutoPlay** will run automatically, choose the **Open folder to view files** option.

Double-click on cardPresso executable file and the Installation Wizard will run, the Welcome view is displayed where you can verify the **Serial Number** of your product and also select the **language to install**. To proceed with the installation click the **Next** button.

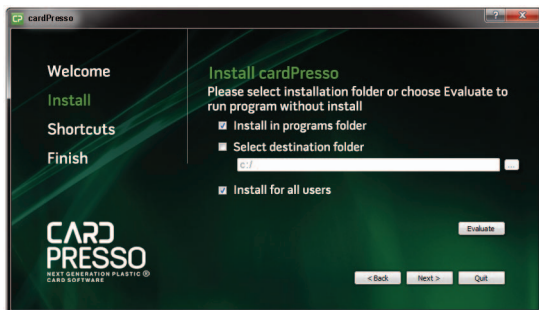


### 03. INSTALL OR EVALUATE

Select now the installation folder, by default cardPresso is installed on Programs folder but you can select another destination by check the **Select Destination folder** option.

Check **Install for all users** if you want other operating system users to run cardPresso also. Click **Next**.

If you want to run the application without install it please click **Evaluate**.



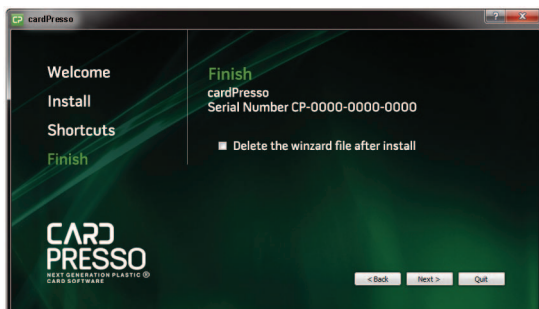
### 04. SHORTCUTS

Check now the shortcuts you want to be created for easy access the application and file association, click **Next**.



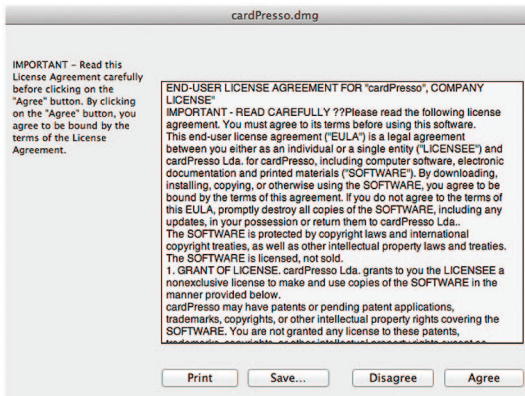
### 05. FINISH

Click **Finish** to install cardPresso.

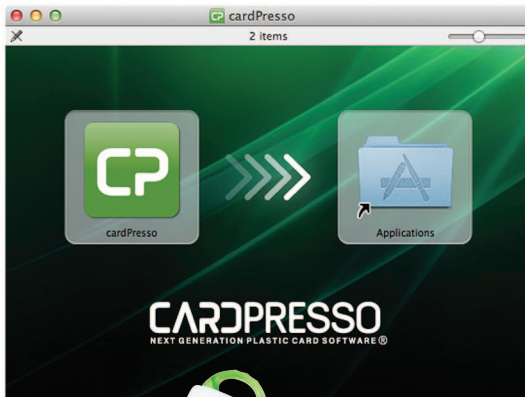


## 06. INSTALL

Plug the USB key and double click on **USB drive icon**, then double-click on **cardPresso.dmg** file and the end user license agreement appears, click **Agree** in order to proceed.



Now drag and Drop cardPresso icon into the Applications alias in order to install.





## 07. CONTACTS AND REFERENCES

### cardPresso Lda.

**PHONE:**

+ 351 261 867 873

**FAX:**

+ 351 707 317 213

**EMAIL:**

**General Information:**

[info@cardpresso.com](mailto:info@cardpresso.com)

**Technical Support:**

[support@cardpresso.com](mailto:support@cardpresso.com)

**Sales:**

[sales@cardpresso.com](mailto:sales@cardpresso.com)



**Support:**

[cardpresso.support](https://cardpresso.support)

Copyright © 2012 cardPresso Lda.

All Rights reserved.

All other trademarks belong to their respective owners.

No part of this manual may be reproduced or transmitted in any form or by any means, electronic or mechanical, including photocopying and recording, for any purpose without the written permission of cardPresso Lda.